

SPECIFICATIONS

| | | |
|--------------------------------------|--------------------|---------------|
| Capacity⁽¹⁾ | 92-277 ppd | 11.5-34.6 gpd |
| Voltage | 120, 208 or 240VAC | |
| Amps | 11.5 or 16 Amps | |
| Weight: Unit only Operating | 23 lbs. | 27 lbs. |
| Warranty | 5 Years | |

⁽¹⁾Rated capacity and energy factor test done and current draw measured in accordance with AHAM DH-1 2008 at 80°F/60%RH inlet air at 0.0 ESP.

FEATURES

| | |
|---------------------------------------|--|
| High capacity | One unit can provide between 92 and 277 pints per day or 11.5 and 34.6 gallons per day. |
| Electrode type humidifier | Generates steam by energizing two electrodes that extend into the steam canister. Current flowing in between the electrodes causes the water to boil creating steam. |
| Water requirements | The Model AS35FP uses standard potable water or softened water. Reverse Osmosis "RO" or deionized water is not recommended. |
| Easy to install | The fan pack can be surface mounted or recessed into a wall and connected directly to the steam humidifier. |
| Accessories included | The steam humidifier, fan pack, Model 5558 control, Model 4028 drain trap assembly, 6' steam hose and 10' of drain tubing. |
| Display panel | Provides power switch for on/off operation, illuminates LEDs to show fill, drain, steam operations and diagnostics. |
| Internal control board | Manages the complete operation of the humidifier. Fills and drains to maintain proper amperage draw, water level and notifies when service is required. |
| Back flow protection | Air gap in the fill cap prevents pressure buildup. |
| Water level sensor | Manages the water level in the steam canister to prevent overfilling. |
| Automatic drain and fill cycle | Unit flushes and fills periodically to maintain the proper conductivity. |
| Drain water tempering | Unit uses cold inlet water to temper the canister water reducing the drain water temperature below 140°F to protect PVC piping and condensation pumps. |
| End-of-season drain | After a 72-hour period with no call for humidity, the humidifier will drain the water from the canister. Unit will remain in stand-by mode until next call for humidification. |
| Operating time monitor | Accumulates actual humidifier run time to activate periodic drain and fill cycles, end-of-season drain function and monitors the life of canister. |
| Easy to maintain | No cleaning or scrubbing, simply remove the steam canister and replace. |



PRINCIPLE OF OPERATION

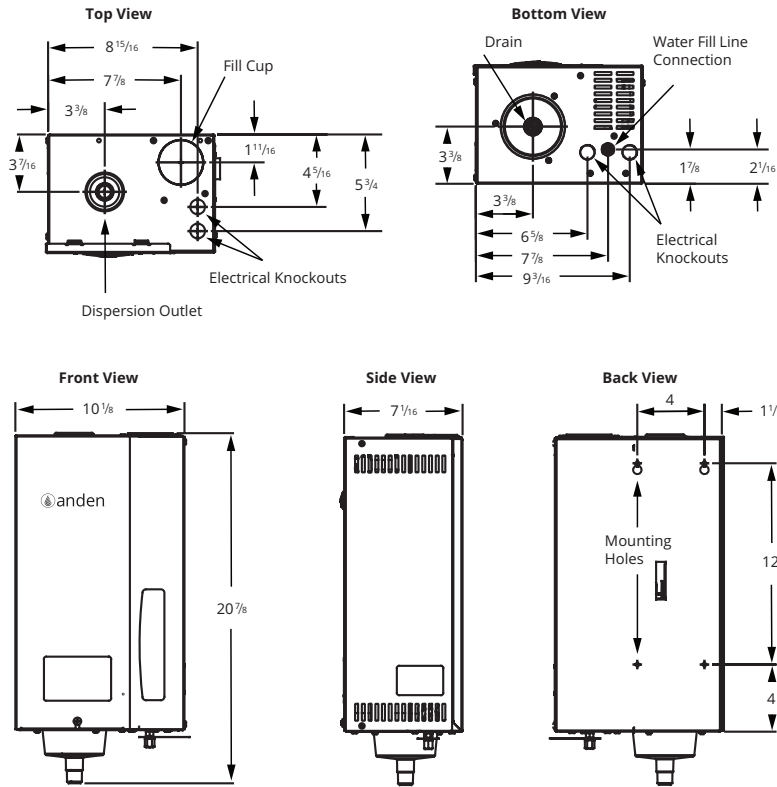
The Anden Model AS35FP Steam Humidifier with fan pack operates utilizing electrode technology: current flowing between two electrodes in the disposable steam canister boils water to generate steam. Drain and fill valves in the humidifier work together to maintain the correct water level in the canister to satisfy the demand for humidity based on the electrical conductivity of the water.

APPLICATION

The Anden Model AS35FP Steam Humidifier with fan pack delivers the necessary humidity needed during early growth cycles through the harvest.

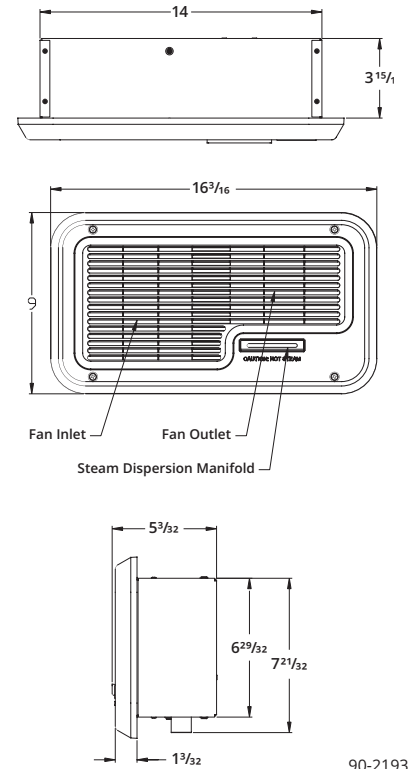
| STEAM CAPACITY | | VOLTAGE | CURRENT DRAW | |
|----------------|------------|---------|--------------|-----|
| Pints/Day | Gallon/Day | | Amps | kW |
| 92 | 11.5 | 120V | 11.5 | 1.4 |
| 128 | 16.0 | | 16.0 | 1.9 |
| 164 | 20.5 | 208V | 11.5v | 2.4 |
| 240 | 30.0 | | 16.0 | 3.3 |
| 186.4 | 23.3 | 240V | 11.5 | 2.8 |
| 276.8 | 34.6 | | 16.0 | 3.8 |

Steam Humidifier



90-1518

Fan Pack



90-2193

Included Control



Model 5558
 Dedicated monitoring and control of each steam humidifier at canopy height.

MODEL 5558 SPECIFICATIONS

Duct Sensor

| | |
|--------------------------------|--------------------------------|
| Power supply | 22 to 26VAC |
| Power consumption | 1 VA |
| Electrical connection | 18 AWG minimum |
| Set point range | 10-90% RH (in 1% increments) |
| Output | Dry contacts |
| Sensor precision | ± 3% at 40% RH and 73°F (23°C) |
| Relative humidity range | 0-100% RH |
| Operating temperature | -40°F to 176°F (-40°C to 80°C) |
| Weight | 0.30 lbs. (130 g) |